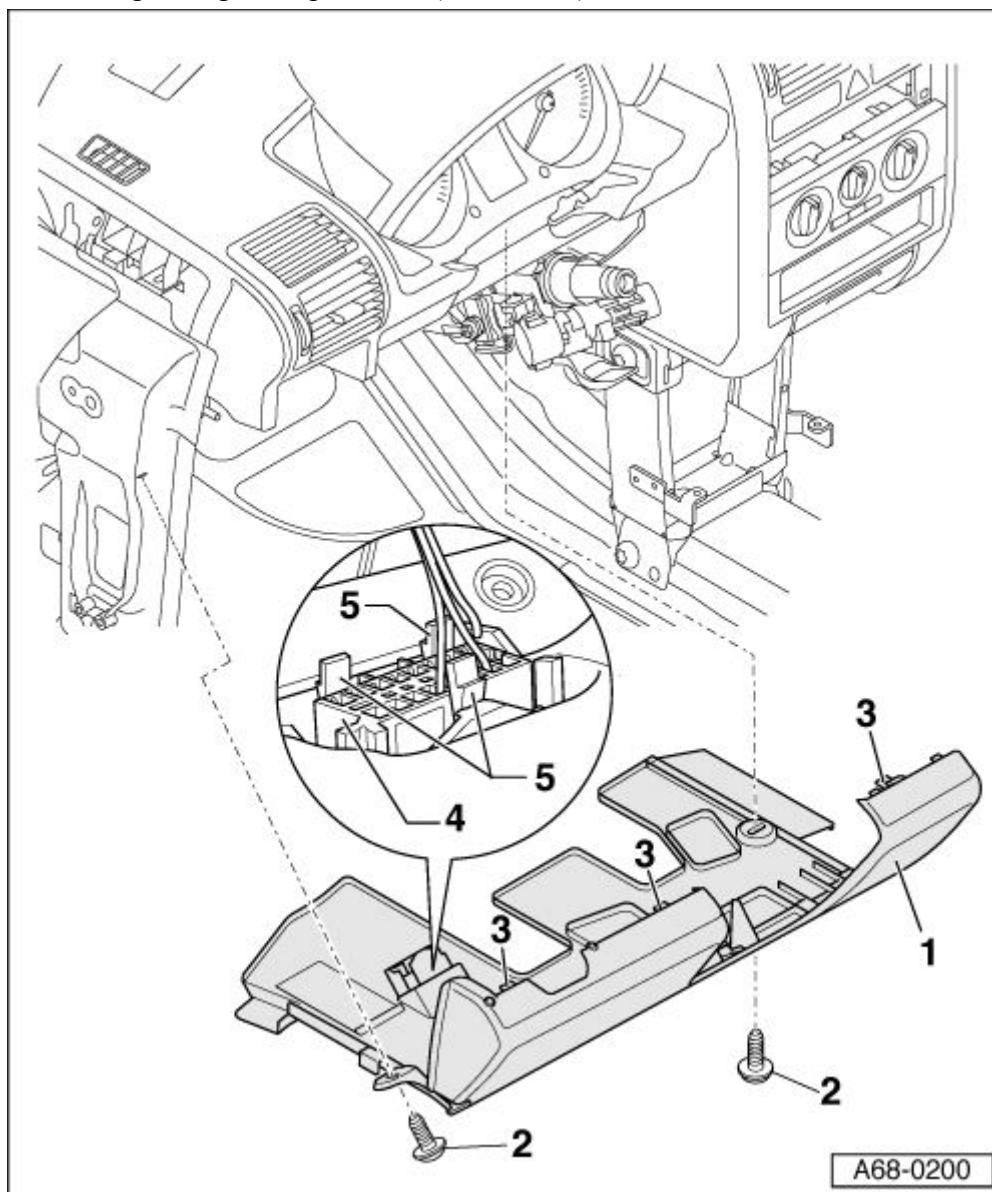


Removing storage compartment (driver side)



1 - Storage compartment (driver side)

q Remove trim for A-pillar (bottom) → [Chapter](#).

q Remove bolts -2- (2x).

q Unfasten driver's storage compartment at top at clips -3- (3x).

q Set down driver's storage compartment.

q Squeeze retaining hooks -5- (3x) and unclip diagnostic connector -4-.

 Note

t Never stand driver's storage compartment -1- on its end.

t For carrying driver's storage compartment -1-, grasp hold between storage compartment and footwell trim.

2 - Bolts (2x)

q Tightening torque: 4 Nm

3 - Clips

4 - Diagnostic connector

5 - Retaining hook